

## FD Boxes and Angled Adapters

Introducing a fully UL Listed surface mount box engineered with features that allow easy, code compliant installation of all types of devices from 15A to 50A, including metallic ground bonding bracket, threaded conduit hubs and external mounting supports. Together with an industry first 55 degree angle adapter, the combination of devices is the only code compliant 45 cu.in. solution for 50A 4 wire installations. The angle adapter can also be installed separately for panel applications.



- ¾ in. NPT and 1 in. NPT threaded hub options
- 30 cu. in. FD box made of high impact thermoplastic material
- External mounting feet, accepts #10 screw
- Stainless steel mounting/grounding bracket
- Accepts duplex and single receptacles up to 50A locking



- 55° angle adapter (15 cu. in.)
- External mounting feet, accepts #8 screw
- Stainless steel mounting/grounding bracket
- Accepts duplex and single receptacles up to 50A locking



## FD Boxes and Angled Adapters

### UL Type 4X

**IP65, 66**  
SUITABILITY



**BRY60CM83A**



**BRY60CM55**



**BRY60CM83WAK**



**BRY60CM88**

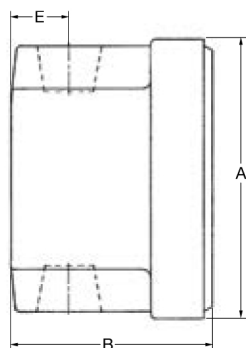
Color	FD Boxes		55° Angle Adapter*	Kits		Blank Cover Plates
	¾" NPT Hubs	1" NPT Hubs		¾" NPT Hubs	1" NPT Hubs	
Yellow	<b>BRY60CM83A</b>	<b>BRY60CM84A</b>	<b>BRY60CM55*</b>	<b>BRY60CM83AK</b>	<b>BRY60CM84AK</b>	<b>BRY60CM88</b>
White	<b>BRY60CM83WA</b>	<b>BRY60CM84WA</b>	<b>BRY60CM55W*</b>	<b>BRY60CM83WAK</b>	<b>BRY60CM84WAK</b>	<b>BRY60CM88W</b>
Gray	<b>BRY6083</b>	<b>BRY6084</b>	<b>BRY6055*</b>	<b>BRY6083AK</b>	<b>BRY6084AK</b>	<b>BRYP14FS</b>

Note: For NEMA 4X rating, use equally listed receptacle/lift cover combination.

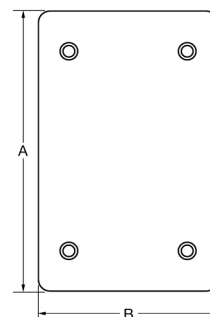
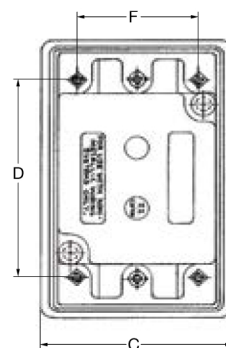
\*Angled Adapter not UL listed.

## Product Dimensions Inches (mm)

	Portable Outlet Boxes	Blank Cover Plates
A	4.56" (115.9)	4.56" (115.8)
B	3.25" (82.6)	2.84" (72.1)
C	2.94" (74.6)	—
D	3.28" (83.3)	—
E	0.875" (22.2)	—
F	1.87" (47.6)	—



FD Boxes



Blank Cover Plates